



NEWS RELEASES

Seasonal Illness Update (Week 3, 2019)

Night Nurse Inc. analysis of actual patient triage data implies better predictability of Seasonal Illness, in advance of CDC reporting.

Summary:

This Seasonal Illness Update is produced utilizing data samples from the week ending January 19th, 2019 (Week 3), from Night Nurse actual patient triage call encounters and compares those trends to those obtained from CDC sources in the same time period.

Night Nurse Triage data is intended to provide an advance look at how the trending spread of influenza and Total After-Hours Patient Call Volume may affect your patient care and staffing operations. This information is based on a Night Nurse weekly sample size of approximately 5,000 RN-based actual triage calls. Data includes patients from Pediatric, Adult and Family Medicine practices, from approximately 35 states.

Week 3 Report

Trends Night Nurse utilizes to produce these reports include:

- Night Nurse Influenza Like Illness (ILI)Activity vs. CDC FluView Report
- Night Nurse Total patient call volume

METHODOLOGY

Night Nurse statistics reflect the percentage of after-hours calls assessed by our RN's, that fit the protocol which meets the criteria for influenza.

Night Nurse data typically is a one or more week advance informational source of that from the CDC FluView Report.

CDC FluView information is taken from Public Health Centers. It's not the comparative numbers that are of focus, but the comparative trending data, as the data sourcing and sample sizes differ in collection methodology.

DATA COLLECTION

The CDC's data used in this update can be reviewed from the latest CDC FluView Report released for the week ending January 12 (Week 2) and can be found at <https://www.cdc.gov/flu/weekly/summary.htm>

CDC DATA BREAKDOWN

The CDC FluView Report indicates elevated influenza levels now in most of the US, with Influenza A being 98.8% of laboratory tested cases. Within the Influenza-A cases, H1N1 is the most predominant strain, showing in 89.1% of laboratory tested cases. H3N2 is being detected in the South Eastern US representing approximately 10.9% of laboratory tested cases.

Three pediatric flu-related deaths were reported during the week ending January 12. A total of 19 influenza-associated pediatric deaths have been reported for the 2018-2019 season.

Night Nurse Influenza Like Illness (ILI) Activity vs. CDC FluView Report

NIGHT NURSE VERSUS CDC DATA COMPARISON

Night Nurse actual reported data of the proportional percentage of people seeking after-hours care for Influenza Like Illness (ILI), as compared to the proportional percentage of ILI cases reported by the CDC are as follows:

For the week ending January 5 (Week 1):

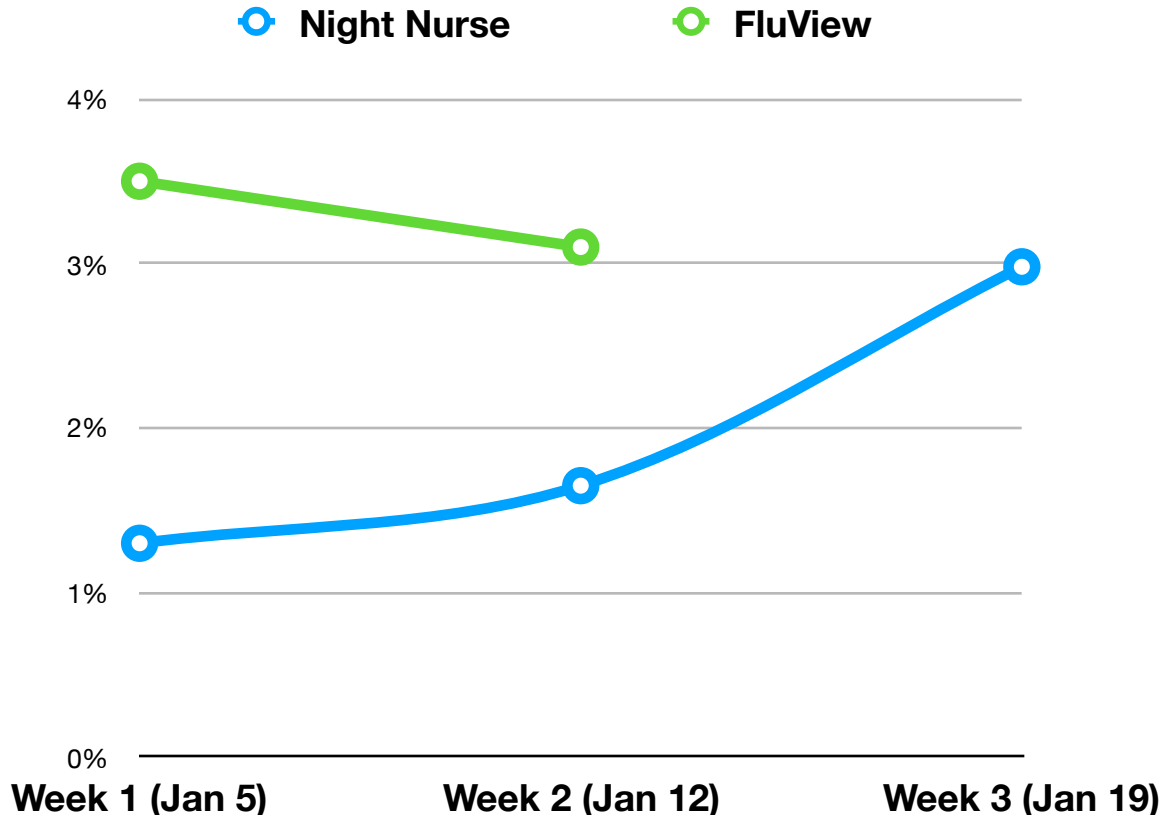
Night Nurse reports 1.3% of ILI cases vs. the FluView report of 3.5%.

For the week ending January 12 (Week 2):

Night Nurse reports 1.65% of ILI cases vs. the FluView report of 3.1%.

For the week ending January 19 (Week 3):

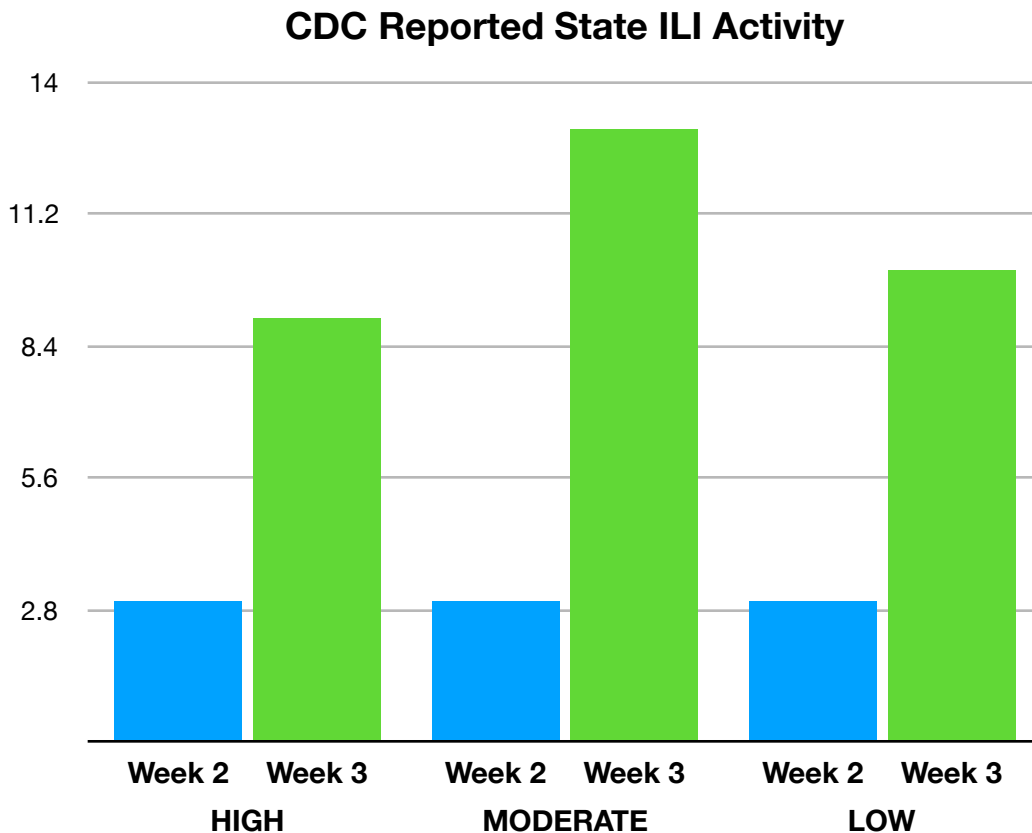
Night Nurse reports 2.98% of ILI cases vs. the FluView which is not yet available.



ASSESSMENT

Night Nurse data suggests that overall ILI activity is still increasing, while the FluView report summary implies that as of Week-2, the spread of influenza is waning.

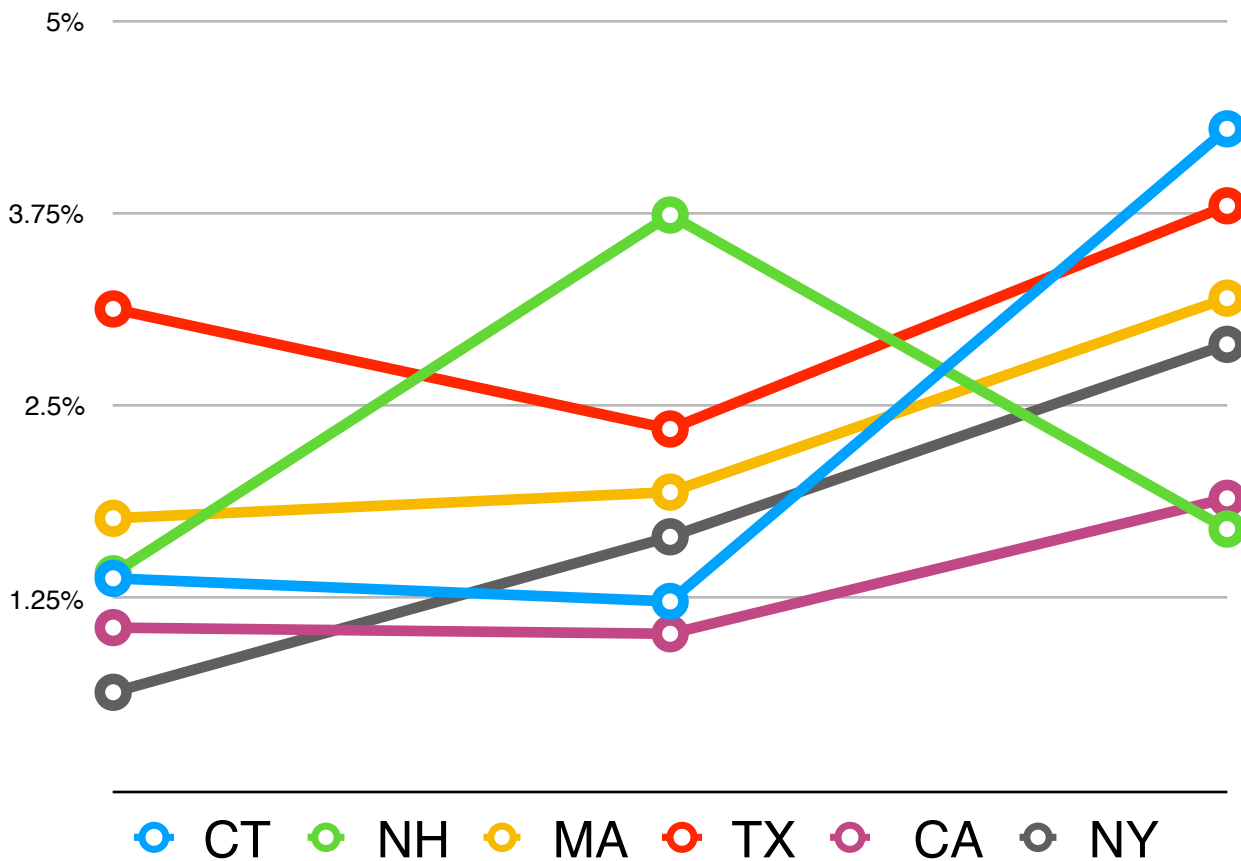
The CDC reports ILI (Influenza Like Illness) with High activity in 9 states, Moderate activity in 13 states and Low activity in 10 states.



DATA BASED ON NIGHT NURSE STATE WIDE REPORTING

Actual Night Nurse statistics from selected states, by above category:

		Week 1	Week 2	Week 3
HIGH	Connecticut	1.38%	1.23%	4.30%
	New Hampshire	1.41%	3.74%	1.70%
MODERATE	Massachusetts	1.77%	1.94%	3.20%
	Texas	3.13%	2.35%	3.80%
LOW	California	1.06%	1.02%	1.90%
	New York	0.64%	1.65%	2.90%



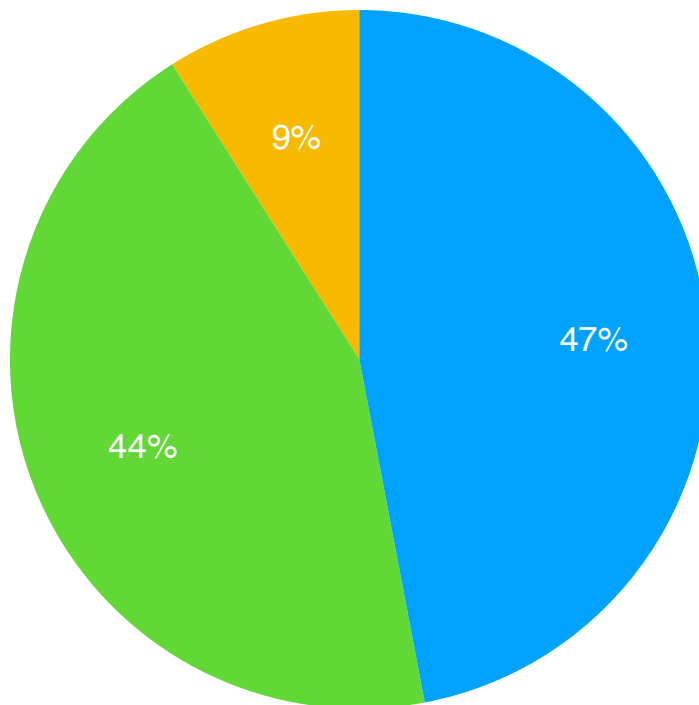
DISCREPANCIES FROM CDC DATA

In some states, the Night Nurse assessment counters the CDC FluView report that shows a decline of ILI cases since the beginning of 2019. Looking at the Night Nurse call data from our advance assessment of Week 3, the data suggests that Week 3 has been the highest percentage week of ILI cases so far this season, with New Hampshire being the monitored state showing the possible peak of ILI having being reached during Week 2.

Of the after-hours ILI cases triaged by Night Nurse for the week ending January 19 (Week 3)

- 47% Were directed to PCP via appointment
- 44% were provided Home-care advice
- 9% were directed to be seen immediately

- PCP via appointment
- Home-care advice
- Seen immediately



Night Nurse Total patient call volume Trend

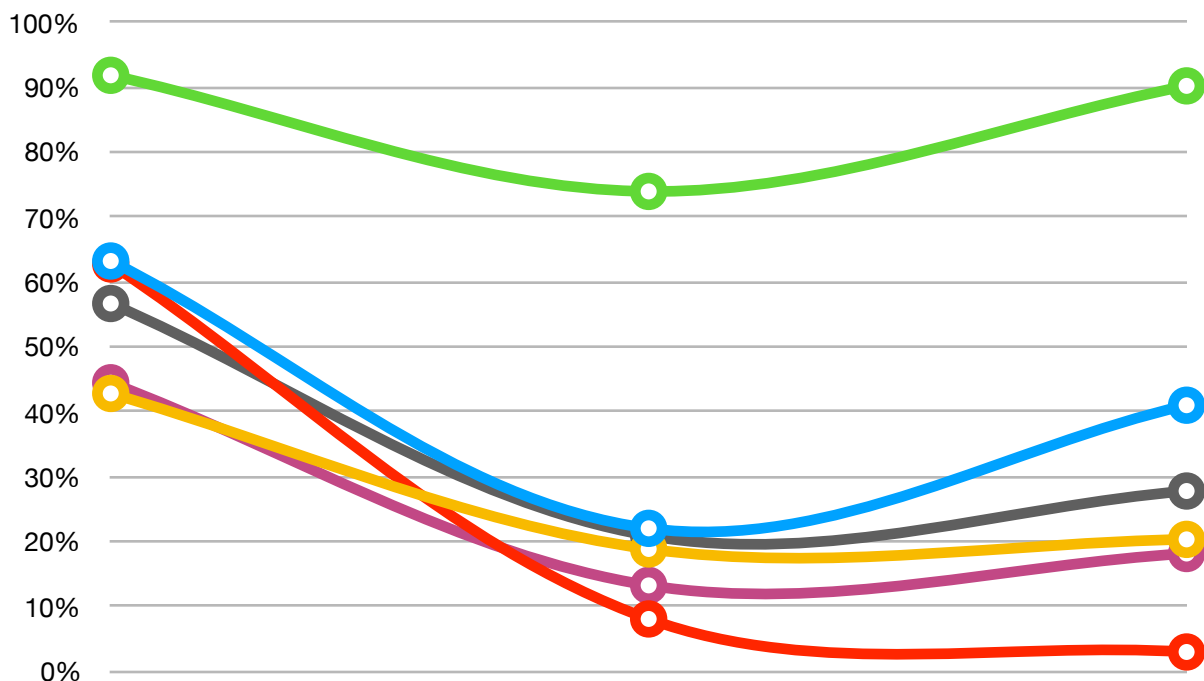
This Call volume Trend update is provided to show the percentage difference in weekly total after-hours call volume as compared to the seasonal low-volume baseline from August 2018.

Night Nurse closely tracks Total After-Hours triage call volume, as an overall indicator of the level of seasonal illness. The same six-states are tracked here.

It should be noted that Week-1 figures include the high-usage period from the end of the 2018 holiday season.

Call Volume Vs. Baseline

State	Week-1	Week-2	Week-3
Connecticut	63.26%	22.07%	41.04%
New Hampshire	91.87%	73.98%	90.24%
Massachusetts	42.85%	18.89%	20.37%
Texas	62.80%	8.11%	3.02%
California	44.50%	13.28%	18.19%
New York	56.71%	20.94%	27.82%
Overall:	49.99%	20.81%	25.10%



ASSESSMENT

Call volume trends suggest that seasonal-illness levels are still elevated, in most of the US. Staffing levels should remain at higher flu-season levels, until trends indicate call volume is waning. Levels in the Southern and South Western US are declining and are at near-baseline or slightly above levels; suggesting healthcare staffing levels should be monitored closely for potential reduction to non-flu season levels. However, because of still rising ILI cases, the possibility still exists for spikes in call volume. Night Nurse staffing levels will remain elevated, until ILI and Call Volume levels are both in decline. All regions suggest elevated influenza levels are still present.

I will update these statistics on a weekly basis for the duration of this flu season. If there are any statistics you would like to receive or a state you would like to have focused, please send me a message on [Linked-In](#) or from the [form on this webpage](#) and I will try to accommodate you.

Feedback is welcome and encouraged. These statistics are for informational purposes only.

Stuart Pologe
Chief Operations Officer
Night Nurse Inc.
508 650 0022
info@nightnursetriage.com